



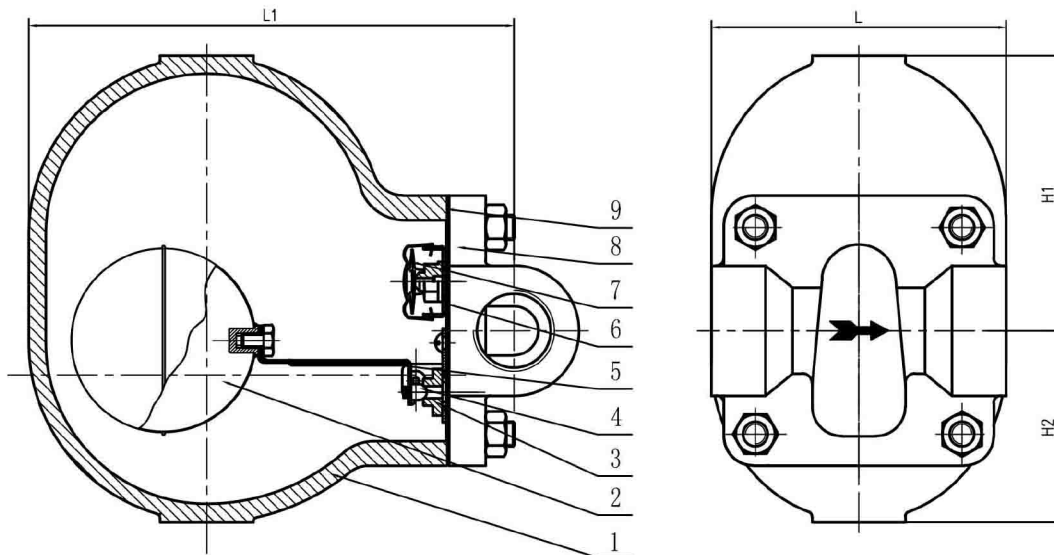
UNIMECH GROUP, MALAYSIA



A MEMBER OF UNIMECH GROUP, MALAYSIA

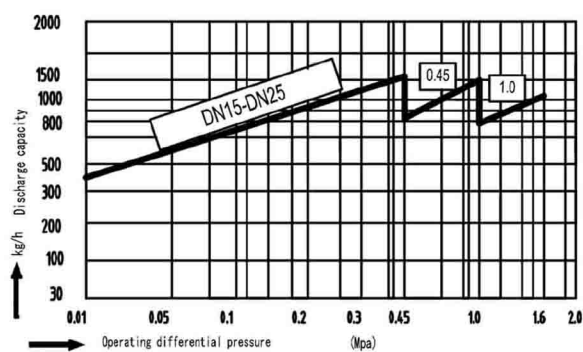
BALL FLOAT STEAM TRAP SCREWED END

Model : FT16-10



Features :

PMO Max. Operating Pressure : 10 bar
TMO Max. Operating Temperature : 250 °C



Technical Data

Material

No	PART	MATERIAL
1	BODY	CAST STEEL WCB
2	FLOAT BALL	SS 304
3	SEAT	2Cr13
4	DISC	2Cr13
5	YOKE	SS 304
6	SEAT	2Cr13
7	VENDING GROUPWARE	SS 304
8	BONNET	WCB
9	GASKET	304+GRAPHITE

Dimension in mm

DN	L	L1	H1	H2
15	120	205	115	80
20	120	205	115	80
25	120	205	115	80

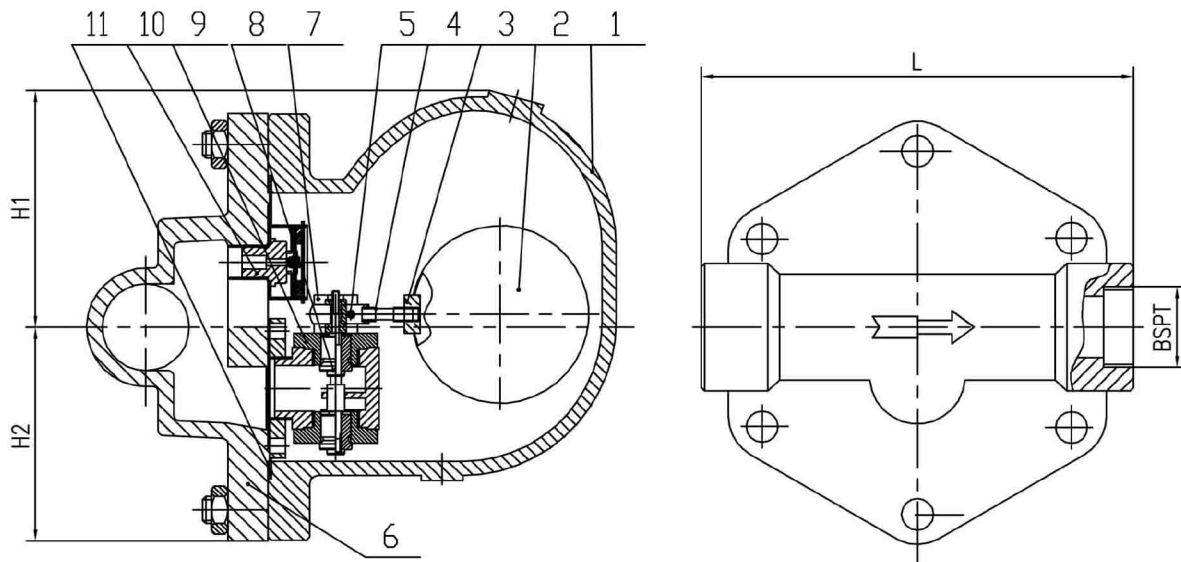
The contents of this literature are for informative purposes only. Arita is not responsible for suitability or compatibility of these products in relation to system requirement. For specific requirements, consult Arita or its distributors. Arita reserves the right to change or modify product design without prior notice.

Our Ref. : OTT/CI3-, OTT/CI4- 08/21

Pg. 1/2

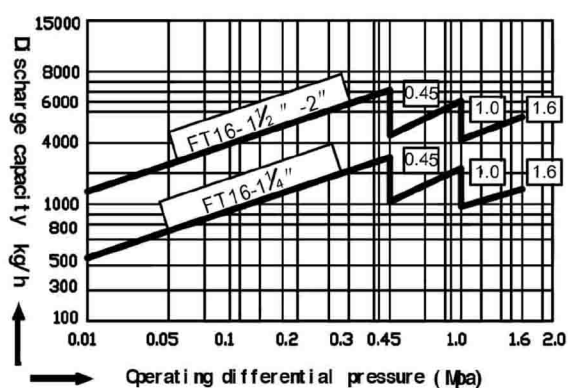
BALL FLOAT STEAM TRAP SCREWED END

Model : FT14-10, FT16-10



Features :

PMO Max. Operating Pressure : 10 bar
TMO Max. Operating Temperature : 250 °C
Connection : BSPT



Dimension in mm

DN	L	H1	H2
32	250	150	100
40	250	150	100
50	250	150	100

Technical Data

Material

No	PART	MATERIAL
1	BODY	CAST STEEL WCB
2	BALL FLOAT	SS 304
3	BOLT	2Cr13
4	BRACKET	2Cr13
5	PIN	1Cr18Ni9Ti
6	BONNET	WCB
7	STEEL GASKET	1Cr18Ni9Ti
8	SEAT	2Cr13
9	SEAT	2Cr13
10	VENTING GROUPWARE	SS 304
11	GASKET	GRAPHITE