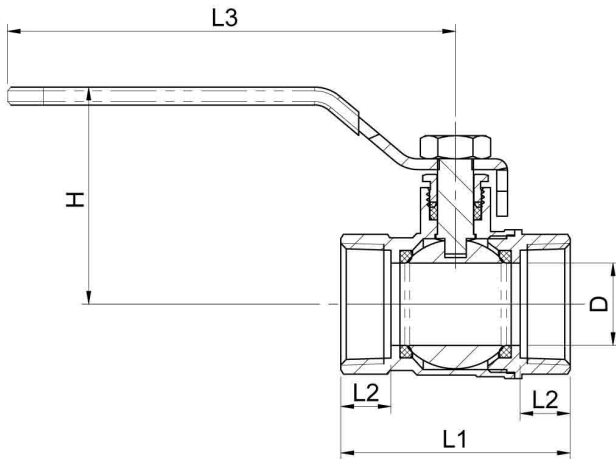


PN25 / CLASS 400 REDUCED BORE BALL VALVE

ARV-1000SE(Series 400)



STANDARD COMPONENT MATERIAL

NO	DESCRIPTION	QTY.	MATERIAL
1	Body	1	Nickel Plated Brass
2	Ball Seat	2	PTFE
3	Ball	1	Chrome Plated Brass
4	Bonnet	1	Nickel Plated Brass
5	Stem	1	Brass
6	Packing Gland	1	PTFE
7	Packing Nut	1	Brass
8	Handle	1	Chrome Steel
9	Nut	1	Nickel Brass

SPECIFICATIONS

- Screwed end : BSPT or NPT
- Full bore design
- 2 piece design
- Blow out proof stem
- Lever handle operation
- Applicable temperature : -20 ~ 120 ° C
- Applicable media : W.O.G. and steam

TEST PRESSURE

Nominal Pressure	:	400 Psi (28 Kg/cm ²)
Hydrostatic Shell Test Pressure	:	600 Psi (42 Kg/cm ²)
Hydrostatic Seat Test Pressure	:	440 Psi (30 Kg/cm ²)
Pneumatic Seat Test Pressure	:	90 Psi (6 Kg/cm ²)

DIMENSION TABLE (MM)

Size		D	L1	L2	L3	H	Weight (Kg)
DN	Inch						
8	1/4	9	38	9	89	39.7	0.125
10	3/8	10	43	10	89	40.7	0.128
15	1/2	13.5	48	12	98.5	47.8	0.162
20	3/4	18	58	14.5	98.5	50.5	0.248
25	1	23	64	14	125	60.5	0.380
32	1-1/4	30	73	14.5	125	65	0.492
40	1-1/2	37	83	15	140	80.5	0.785
50	2	47	99	17.5	140	92	1.220
65	2-1/2	59	125	23	236	115.5	2.560
80	3	69	153	29	283	124	3.960
100	4	84	171	29.5	283	135.5	5.560

