



# Type YSL-1, 2 Safety Valve (Low Lift Type)

Boiler

Heat Exchanger

Secondary Side of Pressure Reducing Valve

2

The type YSL can be commonly used for various types of fluid (steam, vapor, liquid). It has a simple structure and is made of materials with a superb level of corrosion resistance. It is a safety valve that can be used for various purposes, such as a pressure vessel, safety device for various instruments and equipment, hot water boiler, water (including hot water) supplying equipment, cooling and heating facility, and safety device of pressure reducing valves.



Type YSL-1



Type YSL-2

## ■ Features

- Simple structure and outstanding performance.
- Disc and seat are free from leakage or transformation issues, thanks to a precision machining process.
- Test lever attached : Periodical performance inspections can be conducted.
- Approval from the Korea Occupational Safety and Health Agency (KOSHA).

## ■ Specifications

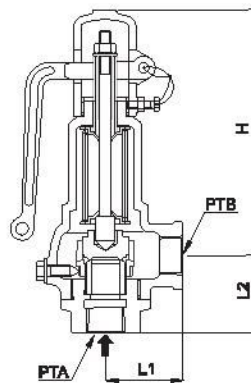
Type	YSL-1	YSL-2
Test lever	Yes	No
Applicable fluid	Steam, air	water
Set pressure range	0.35~10kgf/cm <sup>2</sup> g	
Fluid temperature	220° C below	
End connection	KS PT SCREW	
Materials	Body	GC200
	Disc, seat	STS
Hydraulic test pressure	15 kgf/cm <sup>2</sup> g	

## ■ Dimensions

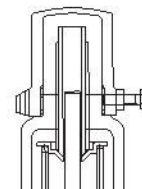
(mm)

Size	Seat diameter	Lift	Effective area (mm)		Face to Face		Height(h)		Connection size		Weight(kg)	
	D		φ	φD1	φD2/4	L1	L2	YSL-1	YSL-2	IN	OUT	YSL-1
15(1/2")X15(1/2")	15	0.4	18.8	176.6	40	41	127	112	1/2"	1/2"	1.1	1
20(3/4")X20(3/4")	20	0.5	31.4	314	50	50	137	122	3/4"	3/4"	1.8	1.7
25(1")X25(1")	25	0.7	54.9	490.8	55	60	162	148	1"	1"	3	2.9
40(1 1/2")X40(1 1/2")	40	1.0	125.6	1256.6	70	75	230	216	1 1/2"	1 1/2"	6.4	6.1
50(2")X50(2")	50	1.3	204.1	1963.5	80	80	245	245	2"	2"	9.3	9

## ■ Dimensional drawing



Type YSL-1



Type YSL-2