



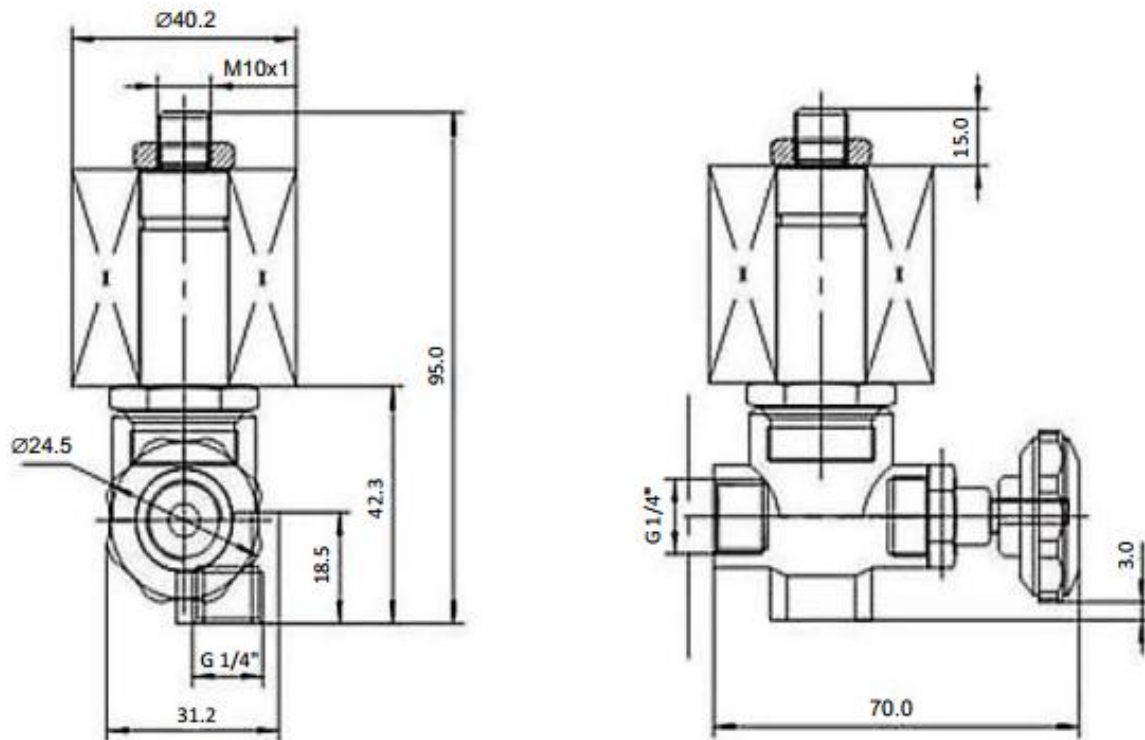
## DL-6E STEAM SOLENOID VALVE

### Product Features:

- ❖ Steam valve used for steam iron.
- ❖ Valve and tube are machined from one same forged brass body, good design to avoid leakage and withstand high pressure.
- ❖ Higher pressure range that can reach to 25 Bar.



### Dimensions (mm)



### Technical Parameters

Item No.	Orifice (mm)	Port Size	Pressure (bar)	Working temp	Voltage	Body Material	Seal
DL-6E	2.5	G1/4	0-25	-20°C – 180 °C	24VDC ~ 230VAC	Brass	Viton