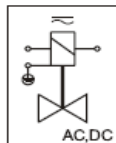
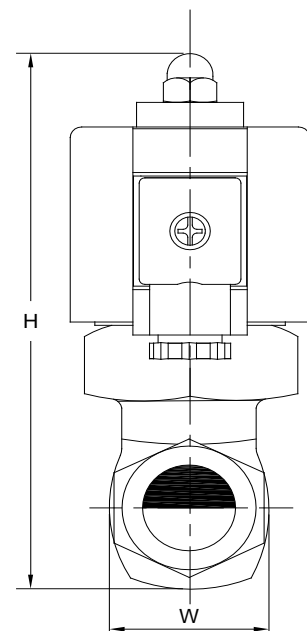
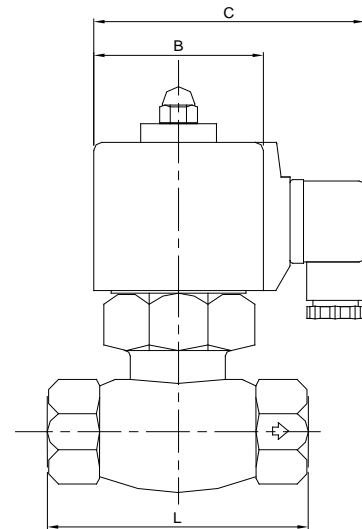


Pilot Operated Type, 2/2 Way, Piston Design, Normally Closed



DIMENSION



Application:

Water, Air, Hot water, Steam, etc.

Function:

Valve de-energized closed by spring power normally closed (NC)
 When energized, the pressure decomposes the secondary side of the piston, then the pressure differential lift the piston from the seat.
 A pressure differential is necessary for proper operation.

Specification:

Body material	:	Brass
Sealing material	:	PTFE
Pressure range	:	1~10 bar
Fluid temperature	:	
PTFE	:	-5 ~ 180°C
Ambient	:	50°C
Enclosure	:	DIN coil IP65 : Option : Lead Wire IP54
Voltage available	:	
AC	:	24, 110, 240V50Hz
DC	:	24V
Tolerance	:	±10%
Power Consumption	:	
AC	:	≈ 28VA
DC	:	30 Watts

Unsuitable Fluid:

- Corrosive Fluid, viscosity degree too high, over 50 cst.
- Liquid when be heating, solid when cool.
- Please do not install in high frequent operations.

Caution :

- Please clean up the inside of pipes before fitted.
- To install a strainer or filter in front of the solenoid valve.
- Up right installation is best for long life.

Model	Size	Orifice (mm)	Cv Value	L	H	W	B	C
AL-15	1/2"	17	4.8	83	148	41.5	63	97.5
AL-20	3/4"	17	4.8	83	148	41.5	63	97.5
AL-25	1"	25	12	95	155	52.5	63	97.5
AL-32	1 1/4"	30	20	110	178	70	63	97.5
AL-40	1 1/2"	30	20	110	178	70	63	97.5
AL-50	2"	50	48	165	223	94	63	97.5

**Note: All technical specification are without obligation!