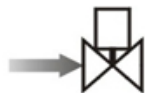


## SLB Series 2/2 Way Pilot Operated High (Low) Temperature Solenoid Valve / Normally Closed



### Normally Closed

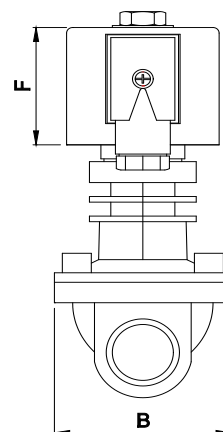
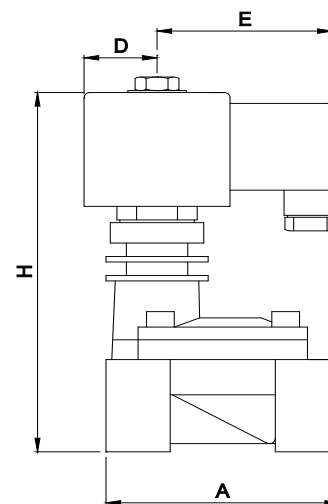
De-energized  
Closed



Energized  
Open



### DIMENSION



### Application:

Oil, steam, High/Low temperature Liquid & etc.

### Specification:

Body	: Forged Brass
Sealing	: Teflon
Pressure (M.O.P.D)	: 1.0~ 10.0 bar Max 15.0 bar
Media Temperature	: -30 ~ 180 °C
Ambient temperature	: -20 ~ 65 °C
Voltage	: AC110, 240V 50Hz : DC 24V
Power Consumption	: AC-27VA(16W), DC-24W
Tolerance	: +/- 10% ( AC ), +/-5% ( DC )
Coil	: Din Standard, Metallic housing

### Feature:

- Adopted high temperature resistance seal material (PTFE) when the media passage the properties is good.
- High flow rate, high & low temperature media.
- Coil is design to turn in free direction and heat conduction protection

### Unsuitable Fluid:

- Viscosity over 50 CST.
- Liquid when be heating, solid when cool.
- Do not use at corrosive fluid.

### Caution:

- Please clean up the inside of pipes before fitted.
- A strainer or filter has to be installed one meter away from the solenoid valve. Please install more than 60 mesh filter
- Installation : flow as the arrow, solenoid vertical and upright direction

MODEL	CONNECTION	CV VALUE	ORIFICE (MM)	DIMENSION (mm)						
				A	B	H				
SLB-15	G1/2"	4.2	13	66	48	157				
SLB-20	G3/4"	7.3	20	75	58	165				
SLB-25	G1"	11.5	25	96	70	176				
SLB-32	G1 1/4"	22.0	32	131	96	196				
SLB-40	G1 1/2"	29	40	131	96	196				

**\*\*Note:** All technical specification are without obligation!