



UNIMECH GROUP, MALAYSIA



A MEMBER OF UNIMECH GROUP, MALAYSIA

1000 W.O.G. FULL BORE THREE-PIECE BALL VALVE SCREWED END

ISO 9001 : 2000



ARV-100SE-3PC

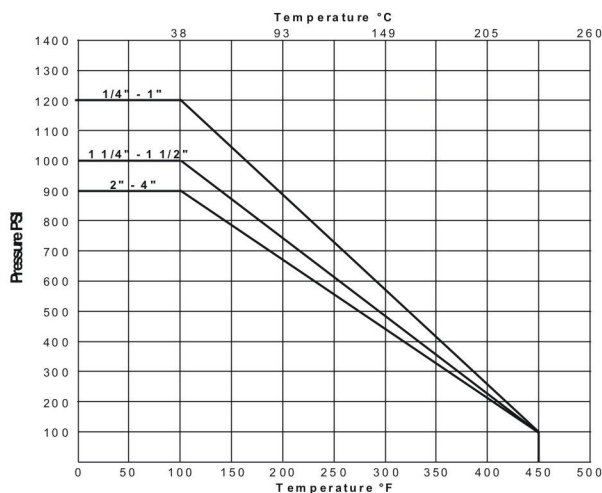
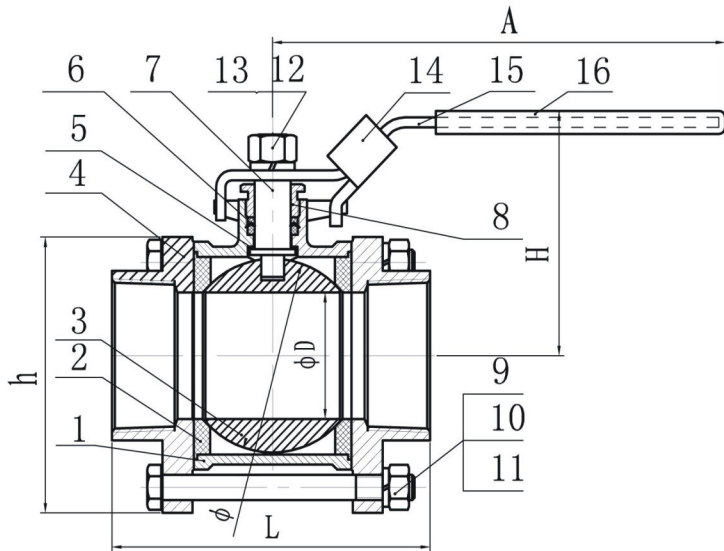
ARV-300SE-3PC

The 3 pc stainless steel body design with a removable center section allows for ease of maintenance. The bodies are investment cast to provide high quality finishing and strength. The full port design minimizes pressure drops across the valve and gives smooth flow characteristics. There are options for ball seat materials, namely PTFE, RPTFE, PPL and PEEK that allow the valves to be employed in environment above 300°C. The ball and seats are of high finishing quality. This contributes to good sealing and low operating torque. Other features available are blowout proof stem and lockable handle. This product is suitable for general and industrial applications

Dimension in mm

SIZES		ØD	L	H	A	h	Ø	WT. (KG)	Cv	TORQUE (Nm)
DN	In.									
6	1/4	12.5	64	48	105	38	21.5	0.39	8	3.0
10	3/8	12.5	64	48	105	38	21.5	0.37	8	3.0
15	1/2	15.0	72	50	105	44	25.5	0.51	32	5.0
20	3/4	20.0	80	56	126	51	32.0	0.74	54	5.5
25	1	25.0	85	67	144	60	39.0	1.08	105	10.0
32	1 1/4	32.0	105	72	144	72	50.0	1.71	200	15.0
40	1 1/2	38.0	113	93	189	80	60.0	2.35	275	30.0
50	2	50.0	132	101	189	94	76.5	3.60	500	36.0
65	2 1/2	65.0	170	125	224	123	97.0	7.30	780	57.0
80	3	76.0	186	135	224	144	115.0	12.5	1150	90.0
100	4	94.0	226	168	298	215	148.0	22.6	1700	120.0

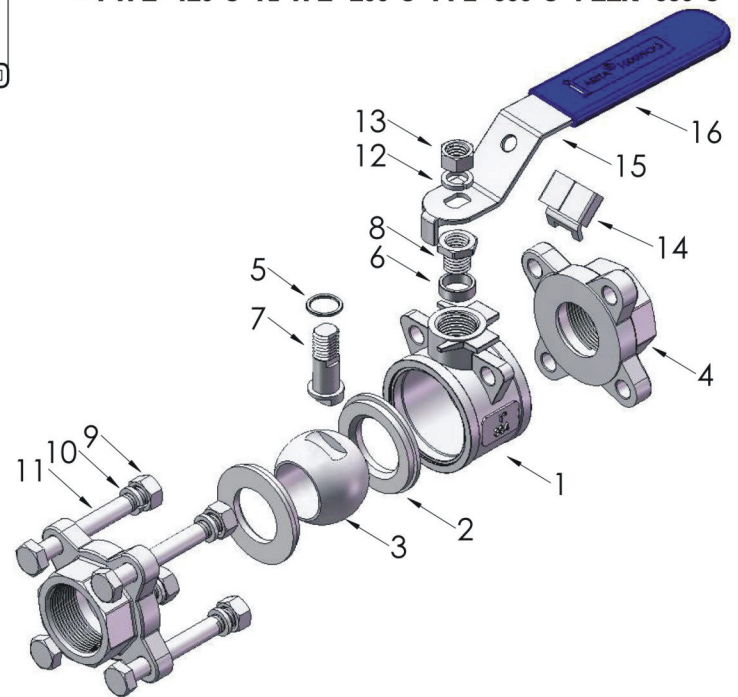
Note : Cv = US Gallon per minutes



Material

No.	PART	QTY.	MATERIAL
1	BODY	1	CF8 / CF8M / WCB
2	SEAT	2	RPTFE / PTFE / PPL / PEEK
3	BALL	1	SUS 304 / 316
4	END CAP	2	CF8 / CF8M / WCB
5	THRUST WASHER	1	RPTFE / PTFE
6	STEM PACKING	1	RPTFE / PTFE
7	STEM	1	SUS 304 / 316
8	GLAND NUT	1	SUS 304 / 316
9	BODY NUT	4	SUS 304 / 316
10	SPRING WASHER	4	SUS 304 / 316
11	BODY BOLT	4	SUS 304 / 316
12	SPRING WASHER	1	SUS 304 / 316
13	HANDLE NUT	1	SUS 304 / 316
14	LOCKING DEVICE	1	SUS 304 / 316
15	HANDLE	1	SUS 304 / 316
16	PLASTIC COVER	1	PLASTIC

* PTFE - 120°C RPTFE - 200°C PPL - 300°C PEEK - 350°C



Features

- * Pipe thread in accordance : NPT, BSP, BSPT, DIN259, DIN299, ISO 228 CLASS A
- * Screwed end
- * Blow-out proof stem / Full Bore
- * Investment casting body
- * 1000psi (69 Bar) W.O.G. / PN63
- * Locking device
- * Wall thickness ASME B16.34
- * Material : S45C / ASTM A216Gr-WCB / DIN 1.0619
SS304 / ASTM A351Gr-CF8 / DIN 1.4308
SS316 / ASTM A351Gr-CF8M / DIN 1.4408

