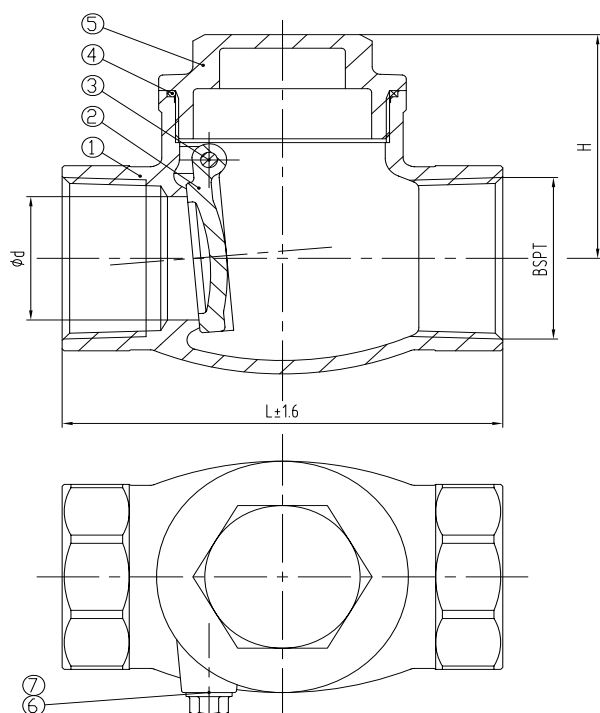


ARITA STAINLESS STEEL SWING CHECK VALVE

CLASS 200 / 600 SWING CHECK VALVE (BSPT)

ARV-103SE



STANDARD COMPONENT MATERIAL

NO	DESCRIPTION	QTY.	MATERIAL
1	Body	1	Stainless Steel
2	Disc	1	Stainless Steel
3	Dowel	1	Stainless Steel
4	Gasket	1	RPTFE
5	Bonnet	1	Stainless Steel
6	Washer	1	RPTFE
7	Bolt	1	Stainless Steel

SPECIFICATIONS

- Stainless steel body and cap
- Screwed end (BSPT)
- Applicable temperature : -20 ~ 180 ° C
- Applicable media : W.O.G. and steam

TEST PRESSURE

Nominal Pressure	:	200 Psi (1.4 MPa)
Shell Test Pressure	:	300 Psi (2.1 MPa)
Seat Test Pressure	:	220 Psi (1.5 MPa)
Gas Seat Test Pressure	:	90 Psi (0.6 MPa)

DIMENSION TABLE (MM)

DN	L	d	BSPT	H	Weight (Kg)
15	65	15	1/2	41.5	0.28
20	75	20	3/4	46	0.42
25	90	25	1	54	0.64
32	105	32	1-1/4	58	0.98
40	120	38	1-1/2	66.5	1.35
50	140	50	2	74	2.04
65	165	64	2-1/2	89	3.65
80	185	76	3	102.5	5.24