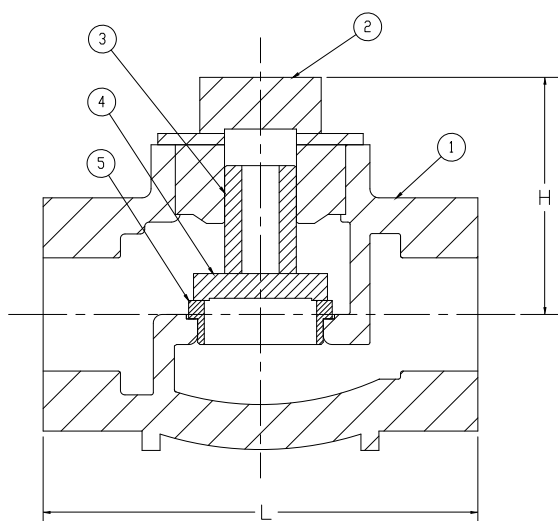


ARITA DUCTILE IRON LIFT CHECK VALVE

10K LIFT CHECK VALVE SCREWED END

ARV-704SE



STANDARD COMPONENT MATERIAL

| NO | DESCRIPTION | QTY. | MATERIAL |
|----|----------------|------|--------------|
| 1 | Body | 1 | Ductile Iron |
| 2 | Bonnet | 1 | Ductile Iron |
| 3 | Stem | 1 | SUS 410 |
| 4 | Disc | 1 | SUS 410 |
| 5 | Body Seat Ring | 1 | SUS 410 |

SPECIFICATIONS

- Screwed end : BSPT or NPT
- End to End dimension : JIS B 2051

TEST PRESSURE

| | | |
|---------------------------------|---|------------------------|
| Hydrostatic Shell Test Pressure | : | 21 Kgf/cm ² |
| Hydrostatic Seat Test Pressure | : | 16 Kgf/cm ² |

WORKING PRESSURE

| | | |
|-------------------------------------|---|------------------------|
| Steam, Oil & Air at 220 °C or below | : | 10 Kgf/cm ² |
| Non-Shock Water at 120 °C or below | : | 14 Kgf/cm ² |

DIMENSION TABLE (MM)

| Size | | L | H | Weight (Kg) |
|------|-------|-----|----|-------------|
| DN | Inch | | | |
| 15 | 1/2 | 65 | 43 | 0.36 |
| 20 | 3/4 | 80 | 48 | 0.56 |
| 25 | 1 | 90 | 55 | 0.8 |
| 32 | 1-1/4 | 105 | 70 | 1.44 |
| 40 | 1-1/2 | 120 | 68 | 2.28 |
| 50 | 2 | 140 | 75 | 3.38 |