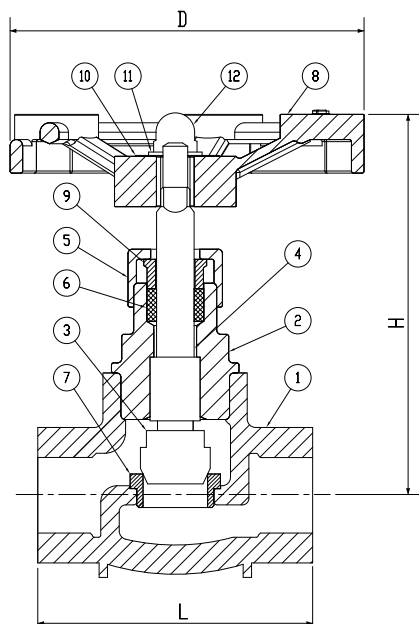


ARITA DUCTILE IRON GLOBE VALVE

10K GLOBE VALVE SCREWED END

ARV-702SE

**STANDARD COMPONENT MATERIAL**

NO	DESCRIPTION	QTY.	MATERIAL
1	Body	1	Ductile Iron
2	Bonnet	1	Ductile Iron
3	Disc	1	SUS 410
4	Stem	1	SUS 410
5	Packing Nut	1	Ductile Iron
6	Packing	1	Graphite
7	Body Seat Ring	1	SUS 410
8	Handwheel	1	Ductile Iron
9	Gland	1	SUS 410
10	Name Plate	1	Aluminium
11	Spring Washer	1	Steel
12	Cap Nut	1	Steel

SPECIFICATIONS

- Screwed end : BSPT or NPT
- End to End dimension : JIS B 2051

WORKING PRESSURE

Steam, Oil & Air at 220 °C or below	:	10 Kgf/cm ²
Non-Shock Water at 120 °C or below	:	14 Kgf/cm ²

TEST PRESSURE

Hydrostatic Shell Test Pressure	:	21 Kgf/cm ²
Hydrostatic Seat Test Pressure	:	16 Kgf/cm ²

DIMENSION TABLE (MM)

Size		L	H	D	Weight (Kg)
DN	Inch				
15	1/2	65	87	71	0.56
20	3/4	80	100	71	0.78
25	1	90	123	86	1.22
32	1-1/4	105	140	86	1.86
40	1-1/2	120	154	137	2.92
50	2	140	180	137	4.26