



UNIMECH GROUP, MALAYSIA



A MEMBER OF UNIMECH GROUP, MALAYSIA

AIR VENT VALVE

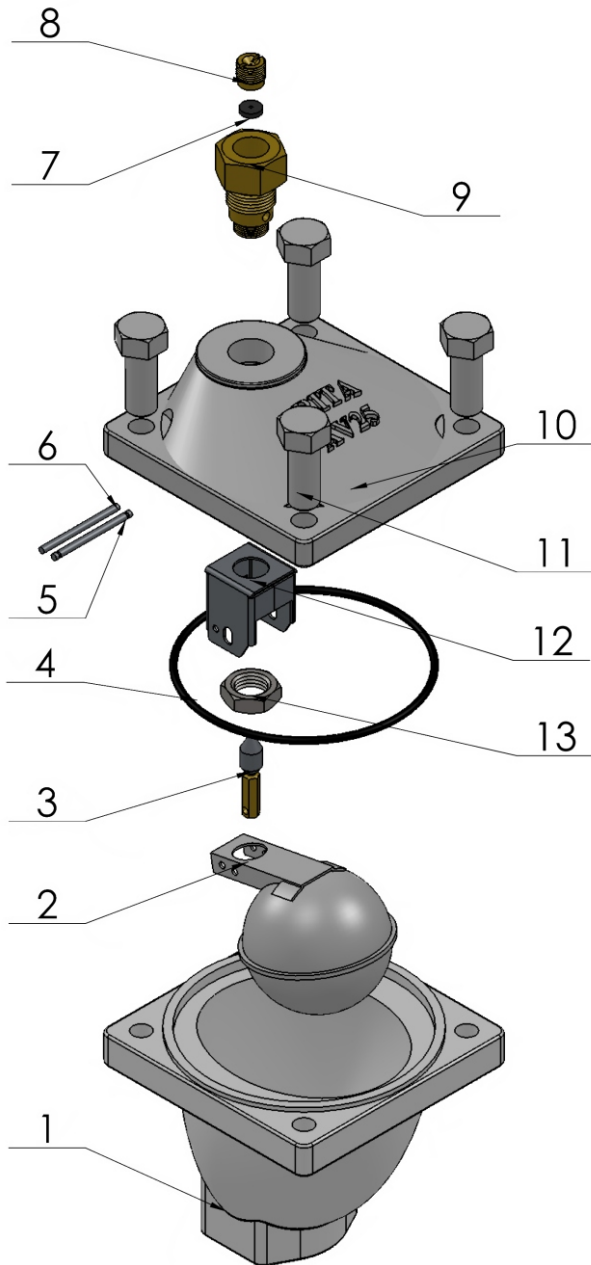
ARV-811SE



Arita Air Vent valve is a simple float operated valve that allows bleeding of air from piping systems without allowing water (liquid) to escape. When the valve chamber is empty the float remains in the lower position. In this position the valve is open & thus allows air to escape. As water enters the chamber it lifts the float. Finally when chamber is full of water the float is in upper position and the valve is closed thus preventing water from leaking out. The float is made from stainless steel for longer service life. The rubber seat offers good sealing to prevent leakage.

Dimensions in mm

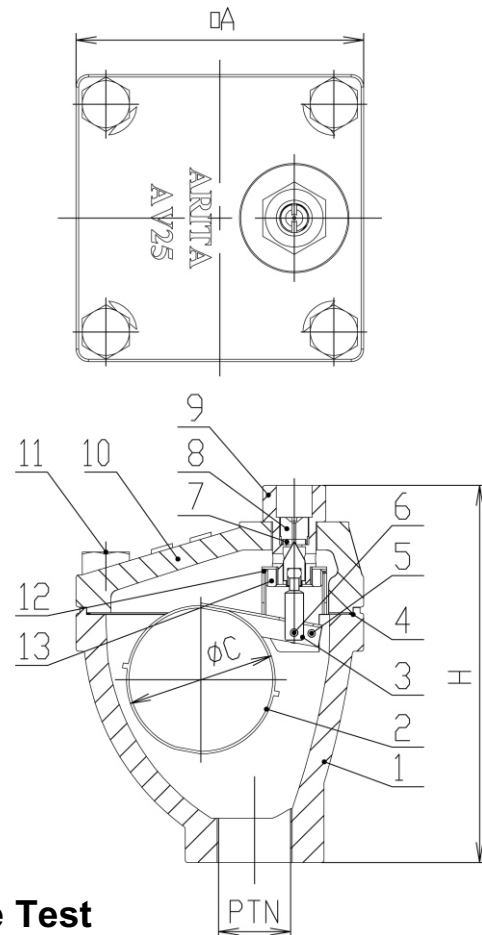
SIZES		PTN	□A	H	ØC	WT KG
DN	In.					
15	1/2	1/2"	120	155	60	3.1
20	3/4	3/4"	120	155	60	3.2
25	1	1"	120	155	60	3.5



Materials

No.	PART	QTY.	MATERIAL
1	BODY	1	FC 200
2	FLOAT	1	SUS 304
3	NEEDLE	1	BRASS / SUS 304
4	O' RING	1	NBR *
5	BRACKET PIN	1	SUS 304
6	NEEDLE PIN	1	SUS 304
7	ORIFICE	1	NBR *
8	NIPPLE NUT	1	BRASS
9	NIPPLE	1	BRASS
10	CAP	1	FC 200
11	BOLT	4	MILD STEEL
12	BRACKET	1	SUS 304
13	JAM NUT	1	BRASS

* OPTIONAL : PTFE (>80°C)



APPLICATION

Applicable Fluid

Working Temperature

Working Pressure (Max)

Cold or Hot Water and Oil with Specific Gravity 0.85 or more

5° ~ 80°C

10 kgf/cm²

Pressure Test

Working Pressure	Hydrostatic Test	
	Body	Seat
10 kgf/cm ²	15 kgf/cm ²	11 kgf/cm ²

